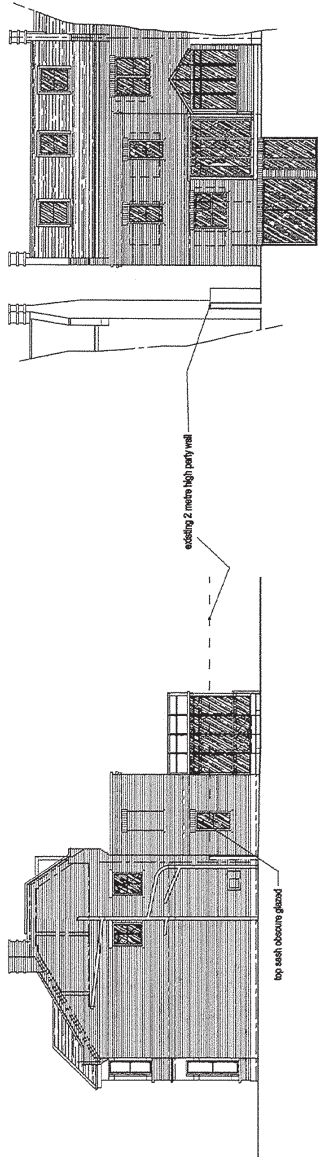
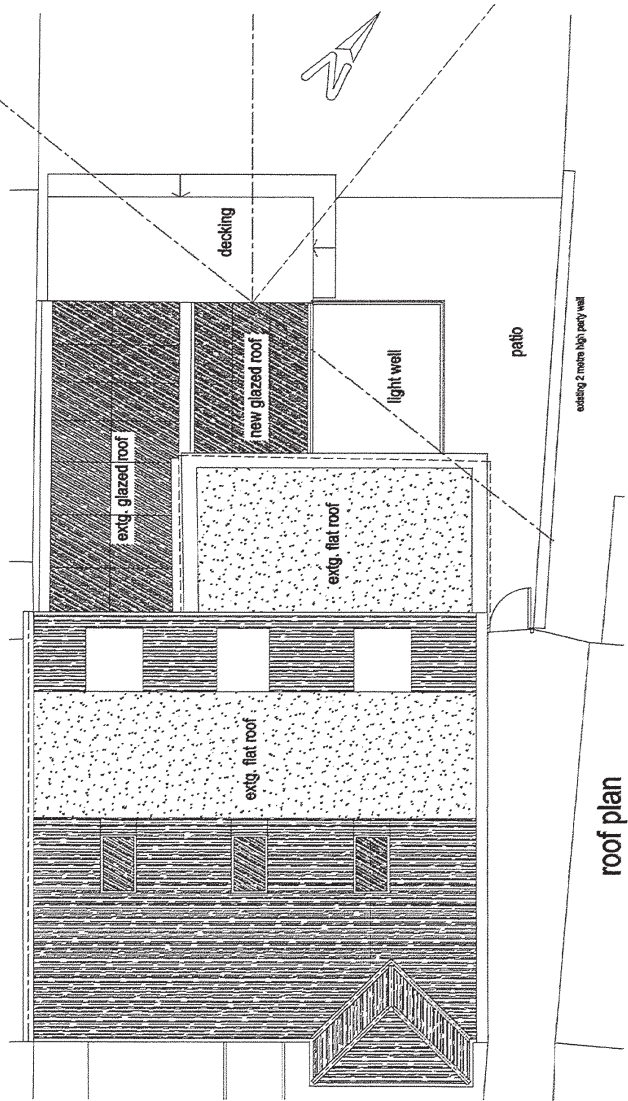
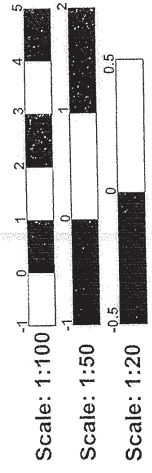


THESE PLANS HAVE BEEN PREPARED BY ME OR UNDER MY CLOSE PERSONAL SUPERVISION AND I AM A REGISTERED ARCHITECT. ALL WORK HAS BEEN CHECKED BY ME OR UNDER MY CLOSE PERSONAL SUPERVISION AND I AM REGISTERED AS AN ARCHITECT. ALL NEW WORK TO BE EXECUTED AS SHOWN ON THESE PLANS IS TO BE CONSIDERED AS A PROVISIONAL DESIGN. THE CONTRACTOR SHALL BE RESPONSIBLE FOR OBTAINING ALL NECESSARY CONSENTS AND FOR OBTAINING ALL NECESSARY CONSENTS. THE CONTRACTOR SHALL BE RESPONSIBLE FOR OBTAINING ALL NECESSARY CONSENTS. THE CONTRACTOR SHALL BE RESPONSIBLE FOR OBTAINING ALL NECESSARY CONSENTS.



side elevation

rear elevation



roof plan

- Roofing: 100% waterproofing to BS 6841 with 100% waterproofing to BS 6841.
- Roofing: 100% waterproofing to BS 6841 with 100% waterproofing to BS 6841.
- Roofing: 100% waterproofing to BS 6841 with 100% waterproofing to BS 6841.
- Roofing: 100% waterproofing to BS 6841 with 100% waterproofing to BS 6841.
- Roofing: 100% waterproofing to BS 6841 with 100% waterproofing to BS 6841.
- Roofing: 100% waterproofing to BS 6841 with 100% waterproofing to BS 6841.
- Roofing: 100% waterproofing to BS 6841 with 100% waterproofing to BS 6841.
- Roofing: 100% waterproofing to BS 6841 with 100% waterproofing to BS 6841.
- Roofing: 100% waterproofing to BS 6841 with 100% waterproofing to BS 6841.
- Roofing: 100% waterproofing to BS 6841 with 100% waterproofing to BS 6841.

London Borough of Merton
19 FEB 2010
Planning Development Control



Project:
Proposed Alterations & Extensions to 58 Kings Road, Merton, SW19 8, for Erol Developments Limited

Drawing Title:
Proposed Roof Plan & Elevations
Scale: 1:100
Date: Feb 2010

LONDON BOROUGH OF MERTON

28 JUN 2010

Dwg No. A010909DF9
Revision No. *

Planning Development Control

This page is intentionally left blank